

(For Research Use Only. Not For Use In Diagnostic Procedures!)

FineTest®

Mouse TNF- α (Tumor Necrosis Factor Alpha) QuickTest ELISA Kit
Gene knockdown (KD) Validation

Catalogue No.: QT-EM0183

Revision: V5.4

Size: 48T/96T

Please do not mix and use reagents from different kits or different batches. Otherwise, it might not work properly.

Please read the manual carefully before use. Feel free to contact us if you have any questions.




Email fine@fn-test.com

Website <https://www.fn-test.com/>

Please provide the batch number (see kit label) for more rapid response and services.

It's strongly recommended to use this kit within the expiry date printed on the kit label.

Technical support related documents

Title of Document	Sample preparation guide	TMB color rendering control	Standard curve and concentration calculation software CurveExpert1.4(Including tutorial)
Website	https://static.fn-test.com/product/manuals/ELISA-Sample-Preparation-Protocol.pdf	https://www.fn-test.com/videos/targeted-control-of-tmb-coloring/	https://www.fn-test.com/content/uploads/2019/08/CurveExpert-1.4.zip
Quick Mark			

Product Features

Application	In vitro quantitative determination of TNF- α concentrations in Serum, plasma, cell culture supernatant, cell lysate or tissue lysate, other biological fluid samples.		
Reactivity	Mouse	Detection Method	Sandwich ELISA, Double Antibody
Range	3.906-250pg/ml (1pg=270mIU)	Sensitivity	2.344pg/ml
Detection Duration	120 minutes (excluding balancing and sample preparation)		
Samples needed for single well(Max)	Serum: 50ul, Plasma: 50ul, Cell Culture Supernatant: 50ul, cell or tissue lysate: 50ul, Other liquid samples: 50ul		
Specificity	Specifically recognize TNF- α and has been validated by KD, no obvious cross reaction with other analogues		
Storage	2-8°C (for sealed box), please do not freeze! See kit label for expiry date		

Detection data and recommended dilution ratios are provided on page 7-8 of the package insert

Background

Uniprot ID: P06804

TNF α also known as Tumor Necrosis Factor alpha. It is mainly secreted by various immune cells, such as monocytes, macrophages, and T cells, and plays an important role as a regulatory factor in inflammation and immune responses. When the body is subjected to trauma, infection, tumors, and other damage, TNF α can stimulate inflammation and activation of immune cells, and participate in resisting external invasion. However, excessive or abnormal release of TNF α can also cause a series of diseases, such as rheumatoid arthritis, inflammatory bowel disease, autoimmune diseases, and others.

Principle of the Assay

This kit was based on sandwich ELISA method. The experiment lasted 120 minutes. Capture antibody was conjugated to an affinity tag that was recognized by a specific antibody coated on the QuickTest plate. Add the Cap/Det Ab working solution into each well, then add the standards and pilot samples into individual wells. If the sample contains TNF- α , a capture antibody-TNF- α -biotin-detection antibody complex was formed. After incubation, unbound conjugates were removed by wash buffer. HRP-Streptavidin was added. After washing, TMB substrates were added to visualize HRP enzymatic reaction. TMB was catalyzed by HRP to produce a blue color product that turned yellow after adding a stop solution. Read the O.D. absorbance at 450nm in a microplate reader. The concentration of TNF- α in the sample was calculated by drawing a standard curve. The concentration of the target substance is proportional to the OD450 value.

Kit Components and Storage

The sealed kit can be stored at 2-8 °C. The storage condition for opened kit is specified in the table below:

No.	Item	Size(48T)	Size(96T)	Storage Condition for Opened Kit
E001	ELISA Microplate(Dismountable)	8×6	8×12	Put the rest strips into a sealed foil bag with the desiccant. Stored for 1 month at 2-8°C; Stored for 12 month at -20°C
E002	Lyophilized Standard	1vial	2vial	Put the rest standards into a desiccant bag. Stored for 1 month at 2-8°C; Stored for 12 month at -20°C
E060	Cap/Det Ab (Concentrated)	60ul	120ul	2-8°C (Avoid Direct Light)
E061	Antibody storage solution	3ml	6ml	
E053	HRP-Streptavidin (Ready to use, orange)	5ml	10ml	
E024	TMB Substrate	5ml	10ml	
E039	Sample Dilution Buffer (blue)	20ml	20ml	2-8°C
E026	Stop Solution	5ml	5ml	
E038	Wash Buffer(25X)	15ml	30ml	
E006	Plate Sealer	3 pieces	5 pieces	
E007	Product Description	1 copy	1 copy	

Note: The liquid reagent bottle contains slightly more reagent than indicated on the label. Use a micropipette to measure accurately.

Required Instruments and Reagents

1. Microplate reader (wavelength: 450nm)
2. 37°C incubator (When using a water bath incubator, ensure the internal air temperature is 35-38°C; When using the cell CO₂ incubator, use a sealed bag to isolate the microplate)
3. Automated plate washer or multi-channel pipette/5ml pipettor (for manual washing purpose)
4. Precision single (0.5-10µL, 5-50µL, 20-200µL, 200-1000µL) and multi-channel pipette with disposable tips(calibration is required before use.)
5. Sterile tubes and Eppendorf tubes with disposable tips
6. Absorbent paper and loading slot
7. Deionized or distilled water

Sample Collection and Storage

The following are simple processing steps for common samples. Please refer to the use of the kit for sample types applicable to this kit. If you need more sample handling solutions, please check the manual Sample Preparation Guide website or QR code.

1. Serum

Place whole blood sample at room temperature for 2 hours or at 2-8°C overnight. Centrifuge for 20min at 1000xg and collect the supernatant to detect immediately. Or you can aliquot the supernatant and store it at -20°C or -80°C for future's assay.

2. Plasma

EDTA-Na₂/K₂ is recommended as the anticoagulant. Centrifuge samples for 15 minutes at 1000xg 2-8°C within 30 minutes after collection. Collect the supernatant to detect immediately. Or you can aliquot the supernatant and store it at -20°C or -80°C for future's assay. For other anticoagulant types and uses, please refer to the sample preparation guideline.

3. Tissue Sample

Generally tissue samples are required to be made into homogenization. Protocol is as below:

- 3.1. Place the target tissue on the ice. Remove residual blood by washing tissue with pre-cooling PBS buffer (0.01M, pH=7.4). Then weigh for usage.
- 3.2. Use lysate to grind tissue homogenates on the ice. The adding volume of lysate depends on the weight of the tissue. Usually, 9mL PBS would be appropriate to 1 gram tissue pieces. Some protease inhibitors are recommended to add into the PBS (e.g. 1mM PMSF).
- 3.3. Do further process using ultrasonic disruption or freeze-thaw cycles (Ice bath for cooling is required during ultrasonic disruption; Freeze-thaw cycles can be repeated twice.) to get the homogenates.
- 3.4. Homogenates are then centrifuged for 5 minutes at 5000xg. Collect supernatant to detect immediately. Or you can aliquot the supernatant and store it at -20°C or -80°C for future's assay.
- 3.5. Determine total protein concentration by BCA kit for further data analysis. Usually, total protein concentration for Elisa assay should be within 1-3mg/ml. Some tissue samples such as liver, kidney, pancreas which containing a higher endogenous peroxidase concentration may react with TMB substrate causing false positivity. In that case, try to use 1% H₂O₂ for 15min inactivation and perform the assay again.

Notes: PBS buffer or the mild RIPA lysis can be used as lysates. While using RIPA lysis, make the PH=7.3. Avoid using any reagents containing NP-40 lysis buffer, Triton X-100 surfactant, or DTT due to their severe inhibition for kits' working. We recommend using 50mM Tris+0.9%NaCL+0.1%SDS, PH7.3. You can prepare by yourself or contact us for purchasing.

4. Cell Culture Supernatant

Collect the supernatant: Centrifuge at 2500 rpm at 2-8°C for 5 minutes, then collect clarified cell culture supernatant to detect immediately. Or you can aliquot the supernatant and store it at -80°C for future's assay.

5. Cell Lysate

5.1. Suspension Cell Lysate: Centrifuge at 2500 rpm at 2-8°C for 5 minutes and collect cells. Then add pre-cooling PBS into collected cell and mix gently. Recollect cell by repeating centrifugation. Add 0.5-1ml cell lysate and appropriate protease inhibitor (e.g. PMSF, working concentration: 1mmol/L). Lyse the cell on ice for 30min-1h or disrupt the cell by ultrasonic disruption.

5.2. Adherent Cell Lysate: Absorb supernatant and add pre-cooling PBS to wash three times. Add 0.5-1ml cell lysate and appropriate protease inhibitor (e.g. PMSF, working concentration: 1mmol/L). Scrape the adherent cell with cell scraper. Lyse the cell suspension added in the centrifuge tube on ice for 30min-1h or disrupt the cell by ultrasonic disruption.

5.3. During lysate process, use the tip for pipetting or intermittently shake the centrifugal tube to completely lyse the protein. Mucilaginous product is DNA which can be disrupted by ultrasonic cell disruptor on ice. (3-5mm probe, 150-300W, 3-5s/time, 30s intervals for 1-2s working).

5.4. At the end of lysate or ultrasonic disruption, centrifuge at 10000rpm at 2-8°C for 10 minutes. Then, the supernatant is added into EP tube to detect immediately. Or you can aliquot the supernatant and store it at -80°C for future's assay.

Notes: Read notes in tissue sample. Determine total protein concentration by BCA kit for further data analysis. Usually, total protein concentration for Elisa assay should be within 1-3mg/ml

6. Other Biological Sample

Centrifuge samples for 15 minutes at 1000×g at 2-8°C. Collect the supernatant to detect immediately. Or you can aliquot the supernatant and store it at -80°C for future's assay.

Recommended reagents for sample preparation: Cat No: E051 100mM PMSF protease inhibitor, Cat No: E050 FineTest Lysis Buffer (for ELISA).

Notes for Samples

1. Blood collection tubes should be disposable and non-endotoxin. Avoid to use hemolyzed and lipemia samples.
2. The best sample storage condition: less than 5 days at 2-8°C; within 6 months at -20°C; within 2 years at -80°C. Stored in liquid nitrogen for a longer storage. When melting frozen samples, rapid water bath at 15-25°C can decrease the effect of ice crystal (0°C) on the sample. After melting, centrifuge to remove the precipitate, and then mix well.
3. The detection range of this kit is not equivalent to the concentration of analyze in the sample. For analyses with higher or lower concentration, please properly dilute or concentrate the sample.
4. Pretest is recommended for special samples without reference data to validate the validity.
5. Some recombinant proteins may not match with the capture or detection antibody in the kit, resulting in the undetectable assay.

Precautions for Kits

1. When using different Elisa kits, labeling is required to avoid mixed components and failed assay.
2. After opening the kit, please refer to the table of storage condition for coated plate and standards (Dampness may decrease the activity.). If any component is missing or damaged during the assay or storage, please contact us for ordering a new one to replace.(e.g. E002 lyophilized standard)
3. Sterile and disposable tips are required during the assay. After use, the reagents bottle cap has to be tightened to avoid the microbial contamination and evaporation.
4. While manual washing, please keep tips or pipettors for adding wash buffer away from the well. Insufficient washing or contamination easily causes false positive and high background.
5. During the assay, prepare required reagents for next step in advance. After washing, add the reagent into the well in time to avoid dryness. Otherwise, dry plate will result in the failed assay.
6. Before confirmation, reagents from other batches or sources should not be used in this kit.
7. Don't reuse tips and tubes to avoid cross contamination.
8. After loading, seal the plate to avoid the evaporation of the sample during incubation. Complete the incubation process at recommended temperature.
9. Please wear the lab coat, mask and gloves to protect yourself during the assay. Especially, for the detection of blood or other body fluid sample, please follow regulations on safety protection of biological laboratory.

Recommended Sample Dilution Ratio

The following table shows the recommended dilution ratios for this kit for a **limited number of samples** for your reference only. **(When the sample content is very low, the original solution can be added without dilution, but it is necessary to ensure that the pH is between 6.8 and 8.0, and it does not contain more than 10% organic solvents or high-concentration protein denaturants.)**

1. Common sample validation:

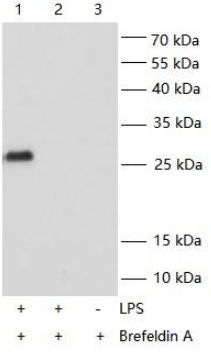
Sample Type	Recommended Dilution Ratio	Content
Normal mouse serum (n=16)	undiluted	ND-20pg/ml
Normal mouse plasma (EDTA, Citrate, heparin) (n=16)	undiluted	ND-30pg/ml
RAW 264.7 cells were cultured with 5%FBS + 1640 + double antibody for 12 hours	undiluted	32pg/ml
RAW 264.7 cells were cultured with 5%FBS+ 1640 + double antibody +1µg/ml LPS, and the cell culture supernatant was detected after 12 hours	undiluted or 1/2 dilution	705pg/ml
RAW 264.7 cells were cultured with 5%FBS+ 1640 + double antibody +1µg/ml LPS for 12 hours. After that, 300ng/ml Brefeldin A (BFA) was added and cultured for 3 hours. Add cell lysis buffer(Catalogue No.:E050), collect the lysate solution (total protein concentration measured by BCA assay: 2.39 mg/ml) to detect.	1/10 dilution	1.16ng/mg(total protein)

2. KD sample validation (Detect *TNF-α*-KD RAW 264.7 cells):

Wild RAW 264.7 cells were stimulated with 1µg/ml LPS for 12 hours to detect cell culture supernatant	1/5 dilution	695pg/ml
RAW 264.7 cells (+siRNA) were stimulated with 1µg/ml LPS for 12 hours to detect cell culture supernatants	undiluted	ND
RAW 264.7 cells (+siRNA) were treated with 1µg/ml LPS for 12 hours and then cultured with 300ng/ml Brefeldin A (BFA) for 3 hours. Add cell lysis buffer(Catalogue No.:E050), collect the lysate solution (total protein concentration measured by BCA assay: 1.75 mg/ml) to detect.	undiluted	21pg/mg(total protein)

Note: ND is lower than the sensitivity of the kit and was not detected

3. Antibody by WB KD validation (Detect *TNF-α*-KD RAW 264.7 cells):

	<p>Lane 1: Wild RAW 264.7 cells were treated with 1µg/ml LPS for 12 hours, then cultured with 300ng/ml Brefeldin A (BFA) for 3 hours. Add cell lysis buffer (Catalogue No.:E050), collect the lysate solution (total protein concentration measured by BCA assay: 1.68 mg/ml with 10ug total protein loading) to detect.</p> <p>Lane 2: RAW 264.7 cells (+siRNA) were treated with 1µg/ml LPS for 12 hours, then cultured with 300ng/ml Brefeldin A (BFA) for 3 hours. Add cell lysis buffer (Catalogue No.:E050), collect the lysate solution (total protein concentration measured by BCA assay: 1.25 mg/ml with 10ug total protein loading) to detect. (no obvious band)</p> <p>Lane 3: Wild RAW 264.7 cells were cultured for 12 hours (unstimulated), then cultured with 300 ng/ml Brefeldin A (BFA) for 3 hours. Add cell lysis buffer (Catalogue No.:E050), collect the lysate solution (total protein concentration measured by BCA assay: 2.23 mg/ml with 10ug total protein loading) to detect.(no obvious band)</p> <p>Primary antibody:</p>
---	---

	<p>All lanes : Capture rabbit monoclonal antibody 1ug/ml</p> <p>Secondary antibody: All lanes : HRP-Goat Anti-rabbit IgG (H) (Catalogue No.: FNSA-0004) at 1/5000 dilution</p> <p>Molecular weight: 27 kDa</p> <p>siRNA Target Sequences for Gene Knockdown: Sense strand: 5'-GACAACCAACUAGUGGUGC-3' Antisense strand: 5'-GCACCACUAGUUGGUUGUC-3'</p>
--	--

4. Verified recombinant protein: (It is a normal phenomenon that some proteins have weak detection signals or cannot be detected at all due to differences in tags, sequences or protein activities)

- A. HEK293-derived mouse TNF-alpha protein Leu80-Leu235
- B. E. coli-derived mouse TNF-alpha protein Leu80-Leu235

Recommended Sample Dilution Protocol

If other dilution ratio for your sample model is required, please refer to the universal dilution ratio below. (The ratio is suitable for single-well assay. For duplicate assay, please follow the calculation: volume of sample and diluent x number of duplicate well)

For 2 fold dilution (1/2): One step dilution. Add 60ul sample into 60ul sample diluent and mix gently.

For 5 fold dilution (1/5): One step dilution. Add 24ul sample into 96ul sample diluent and mix gently.

For 10 fold dilution (1/10): One step dilution. Add 12ul sample into 108ul sample diluent and mix gently.

For 20 fold dilution (1/20): One step dilution. Add 6ul sample into 114ul sample diluent and mix gently.

For 50 fold dilution (1/50): One step dilution. Add 3ul sample and 47ul normal saline (0.9% NaCl) into 100ul sample diluent and mix gently.

For 100 fold dilution (1/100): One step dilution. Add 3ul sample and 177ul normal saline into 120ul sample diluent and mix gently.

For 1000 fold dilution (1/1000): Two step dilution. Create a 50-fold dilution first (normal saline is used throughout the dilution). Then, create a 20-fold dilution and mix gently.

For 10000 fold dilution (1/10000): Two step dilution. Create a 100-fold dilution first (normal saline is used throughout the dilution). Then, create the same dilution again and mix gently.

For 100000 fold dilution (1/100000): Three step dilution. Create a 50-fold dilution and 20-fold dilution respectively (normal saline is used in the first two steps.) Finally, create a 100-fold dilution and mix gently.

Notes: The volume in each dilution is not less than 3ul. Dilution factor should be within 100 fold. Mixing during dilution is required to avoid foaming.

Reagent Preparation and Storage

Take the Elisa kit from the fridge around 20 minutes earlier and equilibrate to room temperature(18-25°C). For repeated assays, please just take the strips and standards required for the current assay, store the rest materials according to the relevant condition.

1. Wash Buffer

Dilute 30ml (15ml for 48T) concentrated wash buffer to 750ml (375ml for 48T) wash buffer with deionized or distilled water and mix well. (The recommended resistivity of ultrapure water is 18MΩ.) Alternatively, take appropriate amount of concentrated wash buffer according to the assay requirement, then create a 25-fold dilution and mix well. Store the rest solution at 2-8°C.

Crystals formed in the concentrated wash buffer can be heated by water bath at 40°C till complete dissolution. (Heating temperature should be below 50°C.) Mix well for the next step. It's better to use up the prepared wash buffer in one day. Store the rest buffer at 2-8°C within 48h.

2. Cap/Det Ab Working Solution

2.1. Measure the concentrated Cap/Det Ab accurately, dilute it with Antibody storage solution and mix thoroughly. (e.g. Add 60ul concentrated Cap/Det Ab into 3ml Antibody storage solution tube or add 120ul concentrated Cap/Det Ab into 6ml Antibody storage solution tube.)

2.2. Store the **Cap/Det Ab Working Solution** at 2-8°C and use it within 3 months. (Do not freeze)

2.3. If your experiment cannot be completed within 3 months, please prepare antibodies each time as needed, 50ul/well. (e.g. Add 20ul concentrated Cap/Det Ab into 1ml Antibody storage solution)

3. Sample dilution

3.1. The "Recommended Sample Dilution Ratio" in the manual refers to the recommended dilution ratio for limited samples like normal serum, normal plasma, cell lysate or cell culture supernatant, not indicating the proteins' expression status in all the samples. Due to disease or model process, the optimal dilution ratio of your samples may be different from the recommended dilution ratio in the manual. To avoid experimental failure caused by unsuitable sample dilution ratio, it is recommended to carry out pre-experiment before formal assay, by selecting a small amount of samples from different groups and considering the "Recommended Sample Dilution ratio" and the corresponding disease or model treatment, setting 3 to 4 groups with 10-fold dilution to get the optimal dilution ratio. For example, target protein A in normal serum needs to be diluted at 1/100 and the disease will lead to its decrease, then you can set four gradients (1/10, 1/100, 1/1000, and 1/10000) while pre-experiment.

3.2. Please refer to "Recommended Sample Dilution Ratio" in the manual to learn operations in detail.

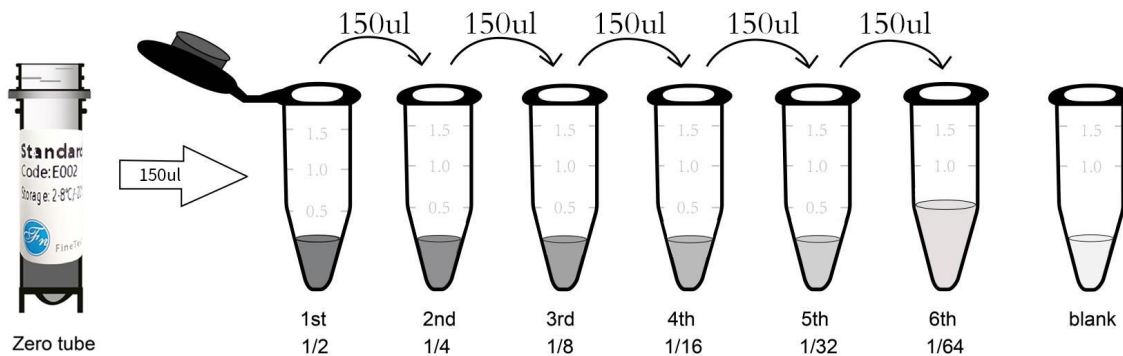
4. Standards

4.1. Centrifuge standards tube for 1min at 10000xg. Label it as Zero tube.

4.2. Add **0.5ml** sample dilution buffer into the standard tube. Tighten the tube cap and Let it stand for 2min at room temperature. Invert the tube several times to mix gently. (Or you can mix it using a low speed vortex mixer for 3-5 seconds.)

4.3. Centrifuge the tubes for 1min at 1000xg, making the liquid towards the bottom of tube and removing possible bubbles.

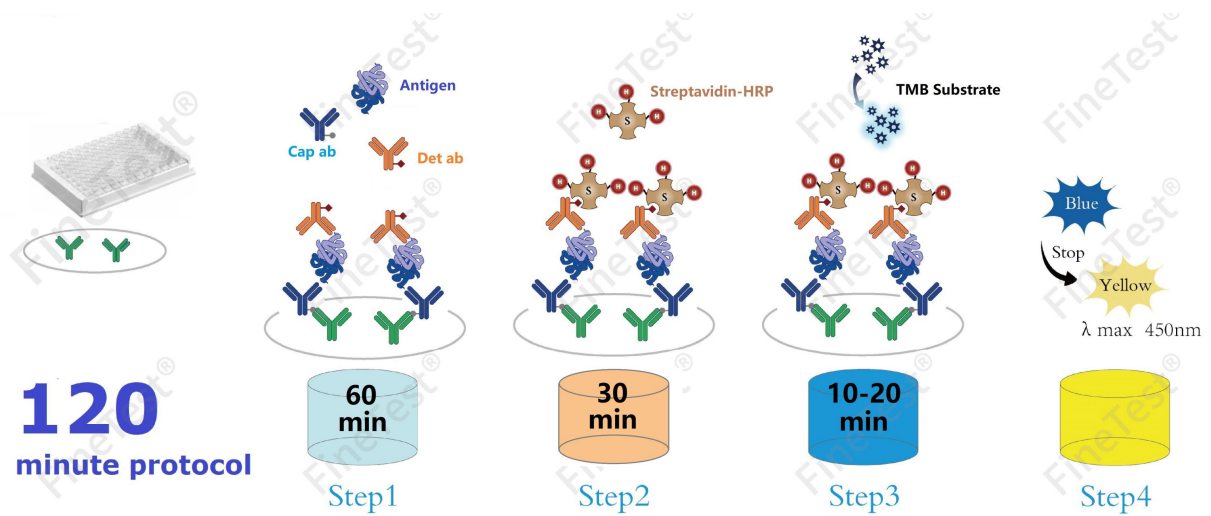
4.4. Standard dilution: Label 7 EP tubes with 1/2, 1/4, 1/8, 1/16, 1/32, 1/64 and blank respectively. Add 150ul of the sample dilution buffer into each tube. Add 150ul solution from zero tube into 1/2 tube and mix them thoroughly. Transfer 150ul from 1/2 tube into 1/4 tube and mix them thoroughly. Transfer 150ul from 1/4 tube into 1/8 tube and mix them thoroughly, so on till 1/64 tube. Now blank tube only contain 150ul sample dilution buffer. The standard concentration from zero tube to blank tube is 2X 250pg/ml, 250pg/ml, 125pg/ml, 62.5pg/ml, 31.25pg/ml, 15.6pg/ml, 7.81pg/ml, 0pg/ml.



Prepare standard solutions

Notes: Store the zero tube with dissolved standards at 2-8°C and use it within 24h(Do not freeze). Other diluted working solutions containing standards should be used in 2h.

Assay Procedure Summary



Step 1: Take out the required plate wells, add 50ul **Cap/Det Ab Working Solution** into each well, then add 50ul Standard or Sample into individual well. (When adding standard or sample, the disposable tip lightly touches the liquid level. Change the disposable tips for different samples and standards.) Gently tap the plate for 10s to ensure thorough mixing then static incubate for 60 minutes at 37°C.

Washing: Wash the plate twice without immersion.

Step 2: Add 100ul HRP-Streptavidin (orange) into each well, seal the plate and static incubate for 30 minutes at 37°C.

Washing: Wash the plate five times without immersion.

Step 3: Add 90ul TMB substrate solution, seal the plate and static incubate for 10-20 minutes at 37°C. (Accurate TMB visualization control is required.)

Step 4: Add 50ul stop solution. Read at 450nm immediately and calculate.

Detailed Assay Procedure

(It is necessary to continuously finish the whole experimental process. The reaction wells need to be immediately added with the working solution, which cannot be too dry. Otherwise, it might not work properly.)

When diluting samples, they must be mixed completely. It's recommended to plot a standard curve for each test.

1. Set standard, pilot samples, control (blank) wells on the pre-coated plate respectively, and then, records their positions. It's recommended to measure each standard and sample in duplicate to decrease experimental errors.
2. **Cap/Det Ab Working Solution** and Standards/sample loading: Add 50ul **Cap/Det Ab Working Solution** into each well. Aliquot 50ul of zero tube, 1/2 tube, 1/4 tube, 1/8 tube, 1/16 tube, 1/32 tube, 1/64 tube and blank into each standard well. Then, add 50ul pilot samples into sample wells. Immediately, gently tap the plate for 10s (Repeated pipetting, suction and mixing in the wells are not allowed.) to ensure thorough mixing then static incubate for 60 minutes at 37°C. (When adding standard or sample, the disposable tip lightly touches the liquid level. Change the disposable tips for different samples and standards.)
3. Wash twice: Remove the cover, then absorb the liquid in the plate or tap the plate on a clean absorbent paper two or three times. Add 300-350ul wash buffer into each well without immersion. Discard the liquid in the well and tap on the absorbent paper again. Repeat the washing step twice.

4. HRP-Streptavidin: Add 100ul HRP-Streptavidin into each well. Seal the plate and static incubate for 30 minutes at 37°C. (Put the whole bottle of TMB into room temperature for 30min.)
5. Wash five times: Remove the cover, and then wash the plate with wash buffer five times. Read washing method in step 3.
6. TMB Substrate: Add 90ul TMB Substrate into each well, seal the plate and static incubate at 37°C in dark within 10-20 minutes. Run the microplate reader and preheat for 15min.
(Notes: Please do not use the reagent reservoirs used by HRP couplings. The reaction time can be shortened or extended according to the actual color change, but not more than 30 minutes. You can terminate the reaction when apparent gradient appeared in standard wells. Weaker or stronger color intensity is unacceptable. Please refer to TMB color rendering control in page 2 or QR code for detail.)
9. Stop: Keep the liquid in the well after staining. Add 50ul stop solution into each well. The color will turn yellow immediately. The order for adding stop solution and TMB substrate solution is the same.
10. OD Measurement: Read the O.D. absorbance at 450nm in a microplate reader immediately. (If your microplate reader has a choice of correction wavelength, set it to 570nm or 630nm. Correct the read value to the OD450 value minus the OD570 or OD630 value. In this way, the OD value of non-chromogenic substances can be corrected and removed, thus obtaining more accurate results. If the microplate reader does not have a 570nm or 630nm wavelength, the original OD450 value can be used.)

Calculation of Results

(Operate Video: <https://www.fn-test.com/videos/elisa-sample-concentration-calculation/>)

1. Calculate the mean OD450 value (using the original OD450 value or the corrected OD450 value) of the duplicate readings for each standard, control, and sample. Then, obtain the value of calculation by subtracting the OD450 blank.
2. Create a four parameter logistic curve by plotting the mean absorbance for each standard on the y-axis against the concentration on the x-axis. (Remove the OD450 blank during plotting.) Alternatively, you can use the curve fitting software offered by the microplate reader (e.g. Thermo SkanIt RE software, [Curve Expert 1.3](#) or [1.4](#) available in FineTest website). To make it easier, visit <https://elisa.fn-test.com> and use our free online calculation program.
3. Calculate the sample concentration by substituting OD450 value into the standard curve.

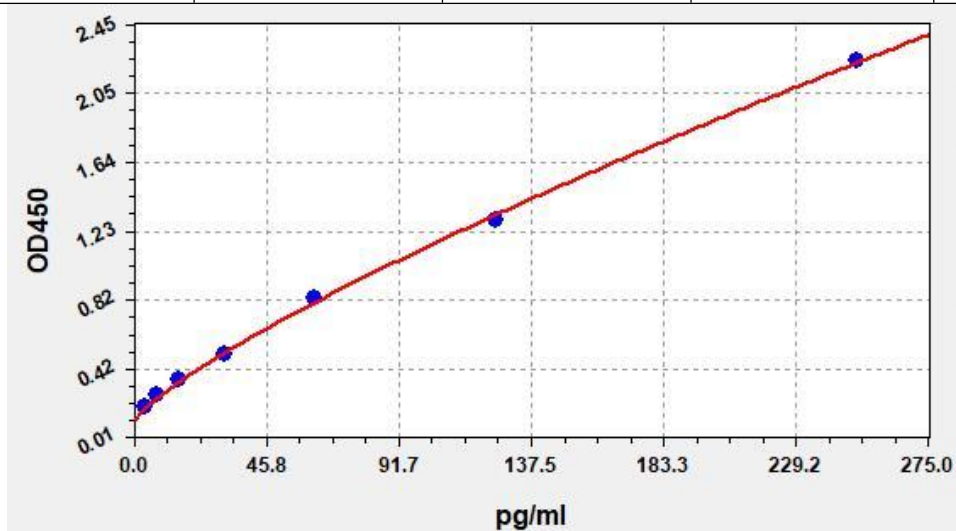
Note: If the sample is added undiluted, the sample dilution caused by incubation of both the sample and antibody should be considered. In this case, the final concentration should be multiplied by 2 from the calculated value. If the sample is 1/100 diluted before adding the plate wells, the final concentration should be multiplied by 200 from the calculated value. And so on.

Typical Data & Standard Curve

This product has been tested by Quality Control Department and meets performance specifications mentioned in the manual. (The humidity in the laboratory is 20%-60%, and the temperature is 18°C - 25°C. (TMB was balanced to room temperature before color development, and incubated at 37°C for 15 minutes in the dark after adding the enzyme label plate holes.)

The following assay data are provided for reference, since experimental environment and operation are different. The establishment of standard curve depends on your own assay.

STD.(pg/ml)	OD-1	OD-2	Average	Corrected
0	0.091	0.096	0.093	0
3.9	0.194	0.204	0.198	0.105
7.81	0.263	0.276	0.268	0.175
15.6	0.344	0.362	0.351	0.258
31.25	0.495	0.52	0.505	0.412
62.5	0.814	0.855	0.831	0.738
125	1.273	1.338	1.299	1.206
250	2.195	2.306	2.239	2.146



Precision

Intra-assay Precision: samples with low, medium and high concentration are tested 20 times on same plate.

Inter-assay Precision: samples with low, medium and high concentration are tested 20 times on three different plates.

Item	Intra-assay Precision			Inter-assay Precision		
	1	2	3	1	2	3
Sample	1	2	3	1	2	3
n	20	20	20	20	20	20
Mean (pg/ml)	7.3	30.03	123.93	8	30.65	127.4
Standard deviation	0.47	1.32	5.49	0.36	1.43	6.05
CV(%)	6.43	4.38	4.43	4.46	4.68	4.75

Recovery

Add a certain amount of TNF- α into the sample. Calculate the recovery by comparing the measured value with the expected amount of TNF- α in the sample.

Matrix	Recovery Range (%)	Average (%)
Serum(n=5)	95-105	98
EDTA Plasma(n=5)	86-101	92
Heparin Plasma(n=5)	92-103	97

Linearity

Dilute the sample with a certain amount of TNF- α at 1:2, 1:4 and 1:8 to get the recovery range.

Sample	1:2	1:4	1:8
Serum(n=5)	87-93%	85-105%	88-105%
EDTA Plasma(n=5)	85-101%	82-98%	85-94%
Heparin Plasma(n=5)	80-93%	82-100%	84-98%

Stability

Perform the stability test for the sealed kit at 37°C and 2-8°C and get relevant data.

Elisa kit(n=5)	37°C for 1 month	2-8°C for 6 months	2-8°C for 12 months
Average (%)	80	95-100	85-98

ELISA Troubleshooting

If the ELISA result is unsatisfied, please take a screenshot for the staining result and store the OD data. Keep used strips as well the rest reagents. Contact us to solve your problem with the kit's catalogue number and batch number. You can also refer to the following table to check the reason.

Problem	Possible Causes	Solutions
Standard curve without signal	Incorrect order for adding reagents	Confirm the required reagent added in each step. Also repeat the assay and verify.
	Use components from different kits	Use the component included in the same kit. Also repeat the assay and verify.
	Forget to add some reagents	Verify whether the required reagent is added.
Overflow OD	Use components from different kits, or prepare the working solution with higher concentration	Use the component included in the same kit. Also repeat the assay and verify.
Poor standard curve	Inappropriate curve fitting model	Try to plot the curve by different fitting models.
Samples without signal	The amount of pilot sample is lower than the detection range.	Decrease dilution ratio or concentrate the sample.
	The detection target is incompatible with the buffer.	Verify the compatibility of sample storage buffer with the pilot sample.
	Incorrect preparation of sample	Please refer to sample preparation guideline and regularly store.
	Longer storage of sample or freeze-thaw cycle	Aliquot and store samples according to the assay requirement.
High CV%	Precipitate is formed in the well during staining.	Increase the dilution ratio of the sample.
	Unclean plate	Don't touch the bottom of the plate during the assay.
	Foam is found in the well.	Avoid foaming during reading in a microplate reader.
	Each well is washed unevenly.	Check whether the tube of the washer is smooth.
	Reagents are not completely mixed.	Mix all reagents completely.
	Inconsistent pipetting	Use calibrated pipette and correct pipetting method.
Standard curve with low signal	Standards are improperly reconstituted.	Before opening, shortly centrifuge the lyophilized standard tube till complete dissolution.
	Standards have been degraded.	Follow suggested storage conditions for

		standards.
	When pipetting, the required volume is incorrect or inaccurate.	Use calibrated pipette and correct pipetting method.
	Expired kit	Don't use expired products.
	Improper storage	Follow suggested storage conditions for all components.
	The well is over dried.	The assay and sample loading process can't be terminated. Especially after washing the plate, add reagents immediately. Seal the plate during incubation.
	Slow colorimetric reaction	Before use, equilibrate the whole bottle of TMB substrate for 30min at 18°C-25°C. Extend the incubation time.
	The wavelength of the microplate reader is incorrect.	Check the wavelength and read the OD450 value again.
	The well is washed excessively.	Follow suggested washing times in this manual.
High Background	Insufficient washing	Follow suggested washing times in this manual.
	Wash buffer is contaminated.	Use the prepared wash buffer immediately. During manual washing, add wash buffer without touching the well.
	Too many detection reagents or higher concentration.	Use calibrated pipette and correct pipetting method.
	Reading of assay result is not in time.	Read the assay result immediately after adding the stop solution.
	TMB substrate is incubated in strong light.	During colorimetry, incubate in the dark.

Declaration

1. Limited to current conditions and scientific techniques, all raw materials are not completely identified and analyzed. This product may have a technology-related quality risk.
2. During the Elisa kit development, some endogenous interferons(not all) in the biological sample have been removed or decreased.
3. The final assay result is related to the validity of reagents, experimental operation and environment. FineTest is only responsible for this kit, excluding sample consumption during using this kit. Before use, please consider and prepare enough samples required by the assay.
4. To get a satisfied assay result, please use all reagents offered by this kit. Don't use any product from other vendors. Strictly follow instructions of this manual.
5. During assay procedure, incorrect reagents preparation and parameter setting of the microplate reader may result in the abnormal result. Before assay, please read this manual carefully and adjust instruments.
6. Even if the assay is performed by the same person, results in two independent assays may be different. Thus, each step in the assay should be controlled to ensure the reproducibility.
7. Before delivery, this kit is subject to the strict QC. Influenced by transportation conditions and experimental devices, the assay result got by the customer may be different from original data. Inter-assay CV between different batches may be caused by reasons before.
8. This kit is not compared to similar kits from other vendors or methods for testing the same detection target. Thus, assay results may be inconsistent.
9. This kit allows for research use only. For IVD or other purposes, FineTest is not responsible for relevant consequences and doesn't bear any legal liability.